

EVERGREEN



WORLD FORESTRY CENTER
MAGAZINE



WORLD
FORESTRY
CENTER

2024 SUMMER ISSUE

Dynamic Programs Centered on People and Forests



Joseph A. Furia
Executive Director,
World Forestry Center

A thriving society relies on forests for clean air and water, places to recreate and relax, and essential products that shape our health, our prosperity, and our way of life. A great local example of this is the 400,000-square-foot, locally-sourced timber roof for the Portland International Airport that opens this month. But when too few people treat forests as a social priority, our forests and our communities fall out of balance, and both suffer — look no further than the more than 1.2 million acres burned by wildfires in our home state of Oregon just half-way through this year's fire season.

World Forestry Center has been at the intersection of people and forests for over five decades. Our work is centered on expanding the way people view and understand their relationship with forests. Through our programming and partnerships we are engaging more voices in the forestry conversation and creating and inspiring sustainable forestry champions. It's not just about the trees; it's about the people.

In this edition of the *Evergreen*, you will learn more about:

- › *Our Multi-Sector Fellowship* – In May, our Fellows gathered in Medford, OR, for a two-day, in-person workshop that included meetings with community leaders impacted by wildfire, tours with collaborating organizations who are leading the fuels reduction efforts necessary to reduce wildfire risk, and the first intense workshop in a years-long effort to explore how they can engage their communities more broadly in the wildfire conversation;
- › *Our Featured Art Exhibit* – Braiding forest mythology with breathtaking photography, *Tree People* portrays the sacred connection between people and trees in Finnish folk culture;
- › *Our Growing Team* – Over the last few months, we have further strengthened our team and programming with the addition of some key new staff members;
- › *Our Upcoming Events* – The remainder of the year is full of programs that will deepen our existing partnerships and explore unique channels for engaging new communities.

This work is important, and we can't do it alone. This summer, consider making a gift to help us reach and empower more of society so we can invest in the forests that have a significant impact on our everyday lives. **Together, we can make a tangible impact on the future of our communities and forests.** ❖

With appreciation,

Joseph A. Furia
Executive Director

Support World Forestry Center by donating at: worldforestry.org.

Fellowship Workshop in Medford

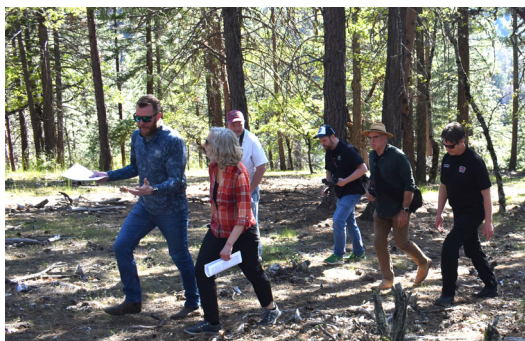
During the program's first year, our Fellows learned from educational and community leaders about the impacts of wildfires. In their second year, our Fellows will use what they have learned to create engagement plans that position them as leaders in addressing wildfire issues impacting their communities.

Our Fellows gathered this May in the Rogue Valley in southern Oregon for a two-day in-person workshop. The first day featured a discussion with community leaders on issues impacting their local communities regarding wildfire and smoke. In the afternoon, our Fellows traveled to nearby forest lands and learned from practitioners on the ground about forest management practices used to mitigate the risk of large and severe wildfires.

The second day, our Fellows worked closely with Emily Brew, Co-Founder and Chief Strategist at Perennial Strategy, to begin developing community engagement plans unique to their own sectors. ❁



We invite you to view this video to learn more about this workshop and our two-year Fellowship Program. Scan the QR Code or visit worldforestry.org/fellows.



About the Fellowship Program

World Forestry Center's two-year Fellowship Program empowers leaders from multiple sectors to engage with a critical issue impacting our forests and communities. Our current cohort, focused on wildfire, includes ten individuals from diverse backgrounds, including public health, energy, carbon, indigenous communities, social justice, and more.

Our Fellowship Program is made possible by a grant from the U.S. Institute of Museum and Library Services.

FEATURED EXHIBITION

Tree People

June 1 – September 29, 2024 | Ritva Kovalainen & Sanni Seppo



From an almost forgotten treasure of beliefs and traditions, World Forestry Center’s latest exhibit, *Tree People*, illuminates the sacred connection between people and trees.

This exhibition is a photographed journey through time and place underpinned with forest-based tradition, myths, and folklore once central to communities in rural areas of Finland, Estonia, and East Karelia.

The artists spent ten years traveling in search of people and trees that continue to hold insignia depicting these customs.



“At first glance, we are presented with stunning images of trees and people standing beside them. Somehow, through the stillness of each photograph, time and custom are captured in a way that show movement — perhaps the rekindling of forest spirits and the people who cherished them,” said Stephanie Stewart Bailey, Experience Developer at World Forestry Center.

“Spending more time with a single photograph, we realize that its accompanying story utterly transforms our first impression — elevating us to wonder and almost jealousy for its particular social practice and relationship,” said Stewart Bailey.

Stories and quotes paired with the photographs provide an opportunity for the viewer to go deeper into the history, culture, and personal connection to individual trees and marked sacred forests.

Learn more about *Tree People* on our website at worldforestry.org/treepeople. ❖



ABOUT THE AUTHORS:



Tree People is the first product of the longstanding cooperation between Ritva Kovalainen and Sanni Seppo. Since the early 1990s, Kovalainen and Seppo have studied the themes of forest, trees, and silviculture in a versatile production: books, exhibitions, and films.

Alongside other books, Kovalainen’s and Seppo’s forest art has been featured at several extensive photography exhibitions worldwide. Another jointly produced exhibition, *Golden Forest* (2011), deals with the relationship of humans to nature and the depletion of ancient forests.

Next Featured Exhibit:

Following Fire A Resilient Forest / An Uncertain Future November 1, 2024 – March 30, 2025

This exhibit by photographer David Paul Bayles and disturbance ecologist Frederick J. Swanson follows the recovery of 173,000 acres of forest and towns that burned along the McKenzie River during the Holiday Farm Fire in Oregon in 2020.



Our Team Continues to Expand

This year so far has been one of growth, which includes our growing team at World Forestry Center. Since January, we have added four new members to our staff. Meet our newest team members:



Natalie Jenkins
Campaign Manager

Natalie joins World Forestry Center after a career in politics, raising money for candidates across the country. She's excited to join the development team and bring her fundraising experience to a new mission. As a Portland native, Natalie grew up exploring our natural spaces across the state. She currently lives in northwest Portland where she spends her free time reading, baking, and getting lost in Forest Park.



Stephanie Stewart Bailey
Experience Developer

Fostering community engagement through interdisciplinary experiences based in science, art, and the natural world, Stephanie works collaboratively with community members, thought leaders, and artists to create STEAM-based public programs and exhibits. She has over 15 years of experience working within science-minded informal learning institutions, such as the Exploratorium and Headlands Center for the Arts, to name a few.



Bree Thompson
Major Gifts Officer

A native Oregonian, Bree's connection to forests began as a little girl in her family's forestland. She has spent most of her career in the Portland non-profit world, supporting pediatric oncology families at Randall and Doernbecher Children's Hospitals. When she is not working, she spends time on her family farm, caring for rescue animals and the land, and watching her daughter explore the beautiful world.

To learn more about the World Forestry Center team,
visit our staff page at worldforestry.org/staff.



Forest + History Pubs | AUGUST 26 & NOVEMBER 25

World Forestry Center has partnered with Oregon Historical Society to co-present two evenings on forest history at McMenamin's Kennedy School. The first program, August 26, will focus on forests, climate, and Oregon history. The second program, November 25, will feature Indigenous knowledge holders and their relationship to cultural burning. It's like being back in the classroom — except this time you get to sit comfortably and enjoy dinner while you listen and learn.

Tickets are available for purchase online and at the door.

Program begins at 7PM



SCIENCE FRIDAY: Land of the Lichen | OCTOBER 30

Join World Forestry Center and Science Friday on October 30 at 7pm for an evening exploring the world of lichen with award-winning science journalist Ira Flatow. Ira and guest scientists Hannah Prather (Reed College), Jesse Miller (Washington Natural Heritage Program), and Jes Burns (OPB) will discuss this complex lifeform built from the symbiotic relationship of fungus and alga. We think you will really like this event!

General Admission - \$45

Tickets are available online at worldforestry.org/scifri

UPCOMING EVENT



September 24-26, 2024 | World Forestry Center | Portland, OR

Join us in Portland for our signature forestland investment conference, **CANOPY: Forests + Markets + Society**. Growing awareness of climate change is generating a new wave of interest in forests beyond the traditional focus on timber assets. While timber remains a fundamental driver in many forest portfolios, some investors are entering this asset class to meet net zero, climate resiliency, conservation, or biodiversity goals.

We kick off the conference with an evening reception on September 24, followed by a series of engaging sessions on September 25 and 26. Topics include: biodiversity and environmental action, carbon markets and forests, climate risks and investments, and emerging innovations in mass timber and forest management.

To register and learn more, visit worldforestry.org/canopy. ❖

Donate today!

Your donation helps us build upon existing programs to drive problem-solving by professionals, create events and experiences to connect the public to its interdependence on forests, and steward a place that supports a community of sustainable forestry champions. ❖

World Forestry Center is a 501(c)3 non-profit with the mission to create and inspire champions of sustainable forestry. Tax ID: 93-6034757

Support World Forestry Center by donating at worldforestry.org.



Scan the QR code
to donate.