

EVERGREEN

WORLD FORESTRY CENTER
MAGAZINE



WORLD
FORESTRY
CENTER

2026 SPRING ISSUE



Featured in this Evergreen:

From the Executive Director

Board of Directors Meet in Atlanta

Featured Exhibition:
Forest Hope Through Innovation

Partners & Friends

World Forestry Center Membership

New Staff & Upcoming Events

60th Anniversary & Gala

Donor Spotlight:
Hampton Lumber

Visit the Discovery Museum

Museum Hours:

Tuesday - Sunday: 10 am - 4 pm

4033 SW Canyon Road

Portland, OR 97221

worldforestry.org

FROM THE EXECUTIVE DIRECTOR

A Future Rooted in Legacy, Rising for What Comes Next

Dear Friends,

This year, as we mark 60 years of impact at World Forestry Center, we find ourselves both reflecting and rising. Our mission is simple, yet urgent: creating and inspiring champions of sustainable forestry. In other words, creating a future where forests and people thrive together. In a time defined by wildfire, climate change, and growing demands on natural resources, this connection has never been more essential, not just because of the risks, but for the opportunities to improve our future.

Already this year, we are investing in the Power of Place at our 5.5-acre campus—enhancing exterior spaces and interior buildings, and reimagining our Discovery Museum, with both new permanent and rotating exhibits that are relevant, challenging, inspiring, and accessible. We are also meeting people where they are with compelling offsite programming in our Forest Pubs and our performing art series, and by collaborating with other cultural institutions, foundations, and businesses. The result—in 2025 we doubled attendance and we see increasing attendance this year, too.

We are also investing in the Power of People by leading partnerships at the intersection of forest management and public health that can help address the growing wildfire smoke crisis while allowing for critical forest management work. Recent research finds that wildfire smoke has resulted in two times the deaths per year as drunk driving and is projected to jump to five times by 2050. That is why we're working closely with national public health associations and experts to support that sector and develop education materials for the public.

This spring, this momentum continues through our 60th Anniversary celebrations, new exhibit development, and national tool development and convenings that expand the forestry conversation. I invite you to be part of this moment. Join us. Engage. Invest in a future rooted in legacy, resilient in purpose, and rising for what comes next.

The future of our forests is the future of our society.



With appreciation,

Joseph A. Furia

Executive Director, World Forestry Center

Help Fund the Future of Forestry

Your tax-deductible gift helps us grow our impact—connecting people to forests, fostering new ideas, and building a more sustainable future. Scan the QR code or visit worldforestry.org to donate today. Tax ID: 93-6034757



BOARD OF DIRECTORS

Board of Directors Meets in Atlanta

World Forestry Center’s Board of Directors convened in Atlanta, Georgia, March 2–3 for a dynamic retreat and board meeting focused on expanding awareness, deepening mission engagement, and shaping national impact. Central to the discussions was the board’s work to establish a strong foundation for long-term financial and programming planning—aligning resources, priorities, and growth strategies to guide the organization’s next chapter.

Highlights of the visit included a tour of Atlanta’s first locally-sourced mass timber office, Ponce 619, with Troy Harris of Jamestown LP, and a Salon Dinner for 30 discussing the intersection of sectors and individuals needed to meet the shared risks and responsibilities to care for our forests. Former board member, Dr. Thomas Rashad Easley, creator of Hip Hop Forestry and founder of Mind Heart Strategies Consulting, facilitated the Salon discussion. Generously sponsored by Eversheds Sutherland and co-hosted by Atlanta-based board members Victor Haley and Tiffanie Starr, the evening fostered meaningful dialogue and new connections.

WFC staff and Dr. Easley also visited and engaged with peers at Atlanta Botanical Garden, Fernbank Museum of Natural History, and the National Center for Civil and Human Rights, building partnerships to expand and extend WFC’s impact nationally and beyond.



Salon Dinner and Board Retreat generously hosted and underwritten by:

**EVERSHEDS
SUTHERLAND**

World Forestry Center Board of Directors

Jeff Nuss, Chair, Handprint Impact Partners

Charlotte Kaiser, Vice Chair, BTG Pactual Timberland Investment Group

Zan Galton, Treasurer, The Western Group

Victor Haley, Secretary, Eversheds Sutherland

Sam Cook, NC State University, College of Natural Resources

Matt Donegan, Donegan Advisors LLC

Craig Johnston, Forest City Trading Group

Stephen Levesque, Campbell Global

Jonathan Prather, Perella Weinberg Partners

Curtis Robinhold, Port of Portland

Tiffanie Starr, Timberland Investment Resources

JF Thye, Alder Point Capital Management

FEATURED EXHIBITION

Forest Hope Through Innovation

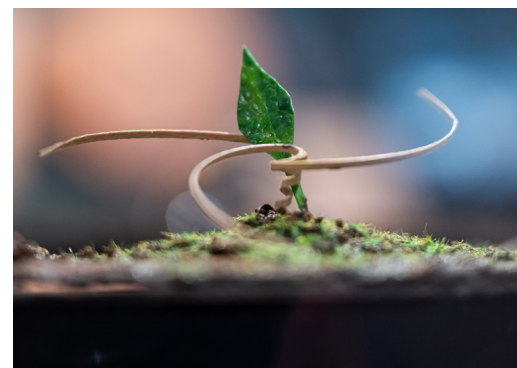
On view at the Discovery Museum through August 2, 2026

Forest Hope Through Innovation is an interdisciplinary art–forest–science exhibition exploring how creativity, research, and community action can shape a sustainable future for the forests we rely on.

Featuring work by more than twelve innovators, the exhibition highlights emerging forest research, from technology and engineering to design and artist–scientist collaborations, each offering new perspectives on forest health.

Projects range from research studies and experimental forest practices to visual art, community science, and innovations developed in material science labs.

By bringing behind-the-scenes research into a gallery setting, *Forest Hope Through Innovation* becomes a public-facing living laboratory where visitors are invited to ask questions, engage with new ideas, and consider their role in forest–climate solutions.



This exhibition is funded in part by



Innovative Research & Technology

AirDNA – Tessa Chesonis, OSU College of Forestry A non-invasive method for studying wildlife by collecting airborne environmental DNA. This research helps scientists detect rare and hard-to-observe forest species and better understand ecosystem health.

Dendrometers – Christopher Still, OSU College of Forestry Electronic sensors measure tiny, real-time changes in tree trunks as they respond to heat, sunlight, and water stress, helping scientists understand how forests react to extreme climate conditions.

E-SEEDS – Future Seeding Initiative and Morphing Matter Lab, UC Berkeley A biodegradable, wood-based spiral seed carrier inspired by the Erodium plant. Designed to self-bury, it blends material science and nature-inspired design to support reforestation.

Pondering – Julia Oldham A yearlong drone study of a ponderosa pine forest near Sisters, Oregon, capturing seasonal shifts from snowfall to wildfire smoke and revealing subtle changes in forest health and structure.

September: Orange – Julia Oldham Created with scientist Christopher Still, this documentary video uses PhenoCam timelapse footage from Oregon and Washington to visualize seasonal forest change through color and time.

Tree Ring Lab – Oregon State University Tree cross-sections reveal centuries of climate, fire, and human history, highlighting fire as a vital ecological process and the role of Indigenous fire stewardship.

Landscape Design Innovations

Design by Fire – Emily Schlickman & Brett Milligan (UC Davis) A collection of speculative design projects and global case studies exploring how communities can live with fire. The work reframes wildfire as both a threat and a natural force in the “Pyrocene”—the age of fire.

Mesquite Migration – CommonStudio (Kim Karlsrud & Daniel Phillips)

A documentary film following the relocation of a mature mesquite tree from rural Texas to an urban neighborhood, exploring assisted migration as a strategy for climate resilience.

Transdisciplinary Art & Collaboration

200 Year Decomposition Project – Ian van Collier Photographs documenting long-term research at the HJ Andrews Experimental Forest, tracking how fallen trees decompose over decades. Created in collaboration with scientists and writers through the Naturalists of the Long Now project.

Ecologies of Care – Juniper Harrower, Reed College An art practice blending ritual, research, and repair. This work views ecosystem health as intertwined with justice, power, and community, exploring how art can support healing landscapes.

Landscape Painting Analysis – Dana Warren & Harper Loeb (OSU) A study using 19th-century landscape paintings to understand forest conditions before modern scientific records, demonstrating how art can serve as ecological data.

Phoenix Eggs – Camila Buitrago, Yale School of the Environment Ceramic seed pods filled with native seeds, biochar, and written wishes. Activated by fire, they slowly open to support regeneration and soil health.

Learn more about Forest Hope Through Innovation at worldforestry.org/hopethroughinnovation.



Upcoming Exhibition: Lookout Landscape

Featuring artist David Buckley Borden, opening September 2026

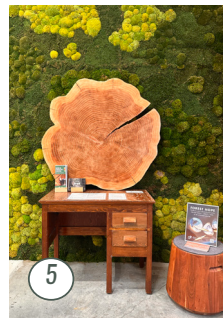
Lookout Landscape explores the iconic fire lookout tower, trail culture, and backcountry gear as a way to examine the complex relationships between working forests and the people who depend on them. Wildfire and other natural and human-caused disturbances provide the backdrop for Borden’s thoughtful and playful exploration of how we understand and interact with forest landscapes.

Through installation art, architectural design, material culture, and science communication, the wildfire-inspired work highlights the many cultural stories connected to Pacific Northwest forests and the evolving relationship between people, fire, and forest ecology.

Learn more at worldforestry.org/lookout-landscape.



PARTNERS & FRIENDS



2026 has been an active year on and off our campus. Here are a few highlights:

1. April's 60th Anniversary Forest Pub featured industry leaders, university researchers, and community partners from Oregon State University, University of Washington, American Forest Resources Council, Hampton Lumber, and Perennial Strategy discussing the future of forests.
2. Audrey Brandis, Sharon Perez, Rob Frerers at the State of World Forestry Center gathering in Corvallis.
3. A celebration of our 60th anniversary at the Portland Timbers' Earth Day match, which we joined as a community partner
4. Our facilities team plans upcoming renovations for Merlo Hall's lawn with Northwest Native Landscaping.
5. A new World Forestry Center pop-up display launched at Travel Portland's Visitor Center, promoting our work to visitors from around the world.
6. Two new mass timber benches were installed in our art gallery, created from recycled timber pillars, in collaboration with local Mass Timber fabricator and manufacturer company Timberlab.
7. Students, professors, researchers, and artists from colleges and universities across the country were recognized at the opening reception for our current exhibition, *Forest Hope Through Innovation*.
8. February's Forest Pub concert featuring musician Majel Connery brought an ethereal experience to the Mission Theater.

WORLD FORESTRY CENTER MEMBERSHIP

Members are the heart of what makes World Forestry Center thrive and we're making it even easier for supporters like you to stay connected, get involved, and make a lasting impact.

Members aren't just supporters—you are partners in the work we are doing. It's about belonging to a community that cares about our forests, and educating and inspiring future generations of forestry champions.

World Forestry Center members enjoy perks like free Discovery Museum admission, invitations to special events, and reciprocal access to other cultural attractions (including Oregon Zoo, Evergreen Aviation Museum, and more), but the real value goes much deeper. As a member, you help fund new exhibitions and programs, help maintain our campus, and support hands-on learning experiences for visitors of all ages.

Our membership program offers three levels—Individual, Dual, and Family—so there are more ways than ever to find the right fit and deepen your involvement.

Ongoing commitment from our members provides steady, reliable support for World Forestry Center. Thank you for being our loyal partners.

Member Spotlight:



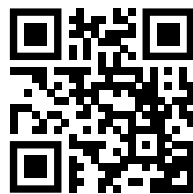
We became members after our first visit because our toddler was so enthralled by the Discovery Museum. We've been back several times and always learn something new. Fostering a love of the outdoors is one of our family values, and we're grateful for the museum's programming that helps us pass that on to our children.

- Jennifer

Become a Member Today

Your support helps sustain our work and deepen our impact, connecting people to forests and the future they shape. Stay engaged, access exclusive benefits, and be part of a community committed to learning, stewardship, and meaningful change.

Scan the QR code or visit worldforestry.org/membership.



Membership Levels

Individual - \$30

Membership for One (1) Adult 18+ and Two (2), one-time Discovery Museum guest passes.

Dual - \$55

Membership for Two (2) Adults 18+ and Four (4), one-time Discovery Museum guest passes. The adults can reside at the same or at different addresses.

Family - ~~\$80~~ \$60* Special Anniversary Price!

Membership for Two (2) Adults 18+ & Four (4) youth (3-17 years of age). The adults can reside at the same or at different addresses.

*All new and renewed Family Memberships in 2026



Forest Store Expansion

Our Forest Store has a fresh new home, with more space to explore and discover. We've expanded our inventory with thoughtfully selected goods and added a cozy snack spot, inviting visitors to pause, recharge, and enjoy a moment of rest during their time with us.

Store Hours: 10 am - 4 pm, Tuesday - Sunday
Summer Hours: 10 am - 4 pm, 7 days a week

WELCOMING NEW FACES AT WORLD FORESTRY CENTER

At World Forestry Center, our work begins with people and the communities that depend on them. By growing our team, we're strengthening our ability to connect people with forests through education, partnerships, and experiences that inspire action. Get to know our newest team members below.



MARIA A. REYES *Director of Philanthropy*

Maria brings more than 25 years of leadership in philanthropy, shaped by her roots in Honduras and Los Angeles. She has supported organizations including the Salvation Army and Oregon Zoo Foundation and served as Executive Director of the American Red Cross in Salem, Oregon. Since joining World Forestry Center in April 2026, she has dedicated her time to building meaningful relationships that inspire support for forests locally and globally. In 2018, she became the first Hispanic woman elected to the Tualatin City Council, a reflection of her deep commitment to community. Outside of work, she enjoys nature walks, music, dancing, and time with family.



THEODORE BRATSCHI *Visitor Services Associate*

Theodore joined World Forestry Center after several seasons with Explore Washington Park. A lifelong Portland resident, he enjoys building connections with nature and the forest. In his role, he continues to grow his own knowledge and passion for the outdoors, while helping museum guests foster their own curiosity and knowledge.



LILY MCDERMED *Visitor Services Associate*

Lily is a recent graduate of Portland State University who discovered her interest in museums through hands-on experience. She spent last summer at Pittock Mansion supporting family programming and engaging visitors of all ages. At World Forestry Center, she is excited to explore new approaches to museum work while building a career in the field.



ZI YE OLDHAM *Office Manager*

Zi Ye was born and raised in Portland and appreciates the region's vibrant food culture and access to the outdoors. She enjoys spending time among the trees, mountains, and lakes that define the area. In her role, Zi Ye assists the World Forestry Center team and office with various projects. Outside of work, she can often be found picnicking or exploring local hiking trails.



AMY PRINCE *Donor Relations Anniversary Associate*

Amy has spent much of her career in nonprofit development, with a focus on events, auctions, and donor stewardship. She joined World Forestry Center during its 60th anniversary year and is excited to support this milestone. Outside of work, she enjoys walking, gardening, making greeting cards, and spending time with her family.



AIDAN WIGGINS *Visitor Services Associate*

Aidan joined the Visitor Services team after working with Explore Washington Park as a Summer Field Representative and assisting with the past two Zoolights seasons. A recent graduate of Whitman College, he grew up in Maryland before moving to the Pacific Northwest. Outside of work, he enjoys computer programming and exploring interests in math and music.

UPCOMING ON CAMPUS

May 15 | Miller Hall



ERAS Concert

with Third Angle New Music and Oregon Repertory Singers Youth Choir

Join us for the world premiere of *Eras*, a three-way partnership between World Forestry Center, Oregon Repertory Singers Youth Choir, and Third Angle New Music. This work grew from a visit to our 2025 *Following Fire* exhibition, where students reflected on images of burned landscapes and resilient regrowth. Their poetry, inspired by this experience, became the text for three composers, forming the heart of this powerful oratorio for youth choir and ensemble.

May 18 | Discovery Museum



Be Wildfire Aware

with Oregon State Fire Marshal and Portland Fire & Rescue

As wildfire risk grows across our region, *Be Wildfire Aware* offers a free, community-focused opportunity to learn practical ways to reduce risk and build resilience. This event brings together local experts, community organizations, and hands-on activities to show how wildfires spread, how homes and neighborhoods can be safer, and what steps families can take to prepare. This event is hosted in partnership with the Oregon State Fire Marshal and Portland Fire & Rescue, and is sponsored by Portland General Electric.

July 18 | Campus-Wide



ForestFest

with U.S. Forest Service and Forests250

Celebrate forests at ForestFest, a fun, family-friendly day full of hands-on activities, wood-themed crafts, interactive kid zones, and live demonstrations from forestry professionals and community partners. Hosted in partnership with the U.S. Forest Service as part of the nation-wide Forests250 initiative, we'll share forest stories through art, workshops, music, food vendors, and engaging activities for all ages. ForestFest is free and open to all.

September 15 - 17 | Miller Hall



CANOPY

Forests + Markets + Society

Join us for the next CANOPY: Forests + Markets + Society conference, happening on our campus in September. Topics this year include: federal policies on forests, renewable bioenergy, forests as a nature-based solution to climate change, carbon markets, tribal management of forests, changes in recent forest management technology, and more.

CANOPY Title Sponsors: Aarden AI, Campbell Global, and Stoel Rives

**Scan QR code to learn
more and join us.**

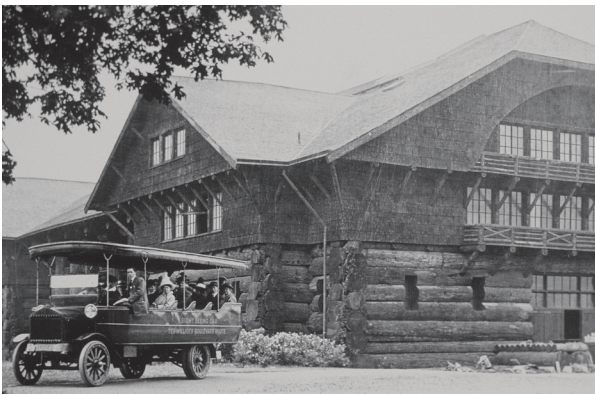




WORLD FORESTRY CENTER

Celebrate 60 years with World Forestry Center through a year of unforgettable moments. Together, we'll honor a legacy rooted in stewardship, reflect on the resilience that has shaped our journey, and look ahead to a future where forests and the communities connected to them thrive.

Join us as we gather, learn, and take action to ensure the next 60 years are even more impactful.



Celebrate With Us: 60th Anniversary Events

April 13

A panel of thought leaders discussed the past and future of forests for a special 60th Anniversary Forest Pub at the Mission Theater.

May 14

The 60th Anniversary Legacy Leaders Dinner honors past and present board members and Leadership Hall inductees.

June

Presale begins of limited-edition World Forestry Center's 60th Anniversary Pendleton Blankets, designed by Portland artist and architect Genevieve Fu.

July 18

Bring your families for the 60th Anniversary Forest Family Picnic and the ForestFest celebrations, in partnership with USFS Forests250—featuring Smokey Bear, Woodsy Owl, and a Moon Tree planting.

October 15

"Lookout Landscape" Art Exhibition Opening Reception, showcasing forest health roots and the legacy of forest culture.

November 14

The celebration culminates with the 60th Anniversary Gala.

Rooted in Legacy. Resilient in Purpose. Rising for the Future.

More information and event tickets are available at worldforestry.org.

ROOTED. RESILIENT. RISING.

Get your Forest Flannel Ready! *We're going to party like our forests depend on it.*

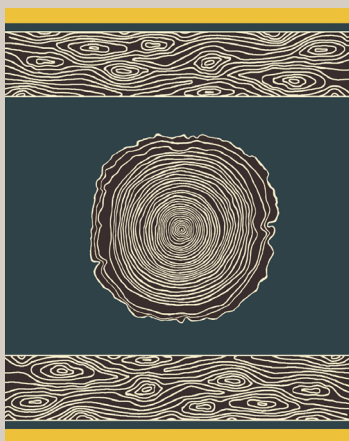
An evening like this only happens every 60 years.

Join us, **Saturday, November 14, 2026** for a celebration that is as meaningful as it is unforgettable, bringing together leaders, partners, and friends of World Forestry Center for a night rooted in legacy and rising toward the future.

Begin with a Cocktail Hour designed for connection. Settle in for a Grand Gala Dinner honoring six decades of impact. Then step into an After Party that carries the energy forward—an inspired close to a defining moment.

This is more than a gala—it is a statement of leadership and a shared investment in the future of forests and the health of our world.

A limited number of sponsorships, VIP tables, and tickets are available.



At the Loom Now: A Story of Growth

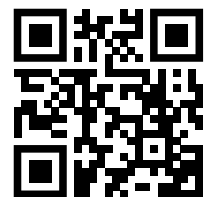
To mark 60 years of advancing our mission, we invited artists to reflect on the relationship between people and forests. Selected through a national call, Portland-based architect and artist Genevieve Fu's design, *A Story of Growth*, embodies resilience, stewardship, and change.

Brought to life in partnership with Pendleton Woolen Mills, this numbered, limited-edition blanket supports the transformation ahead.

Pre-orders begin in June | Delivery begins in September

The transformation starts with you

Scan the QR code to find your place in this milestone year: exclusive gala sponsorships, limited VIP tables and tickets, Pendleton blanket pre-orders, and participation in our *60 Gifts for 60 Years* initiative.





WORLD
FORESTRY
CENTER

4033 SW Canyon Rd
Portland, OR 97221

Address Service Requested

DONOR SPOTLIGHT

Hampton Lumber

For more than 80 years, Hampton Lumber Company has been rooted in responsible forest management, reliable domestic wood production for quality building materials, and a deep commitment to rural communities across the Pacific Northwest. As a family-owned company headquartered in Portland, Oregon, Hampton operates sawmills and manages forestland throughout Oregon, Washington, South Carolina, and British Columbia.

Hampton has provided generous leadership support for World Forestry Center in meaningful ways over the decades. Most recently, they have co-hosted on our campus summer and winter forest celebrations and the Blessing of the Portland Timbers log, participated on Forest Pub panels, and are serving as both a sponsor and partner for our upcoming 60th Anniversary Gala. They are also the presenting sponsor for the 2026 Free Day Series at the Discovery Museum, providing six free-admission days throughout the year.

Hampton's support reflects a shared vision: connecting people to the vital role forests play in everyday life. Together with World Forestry Center, they are advancing public understanding of sustainable forestry and shaping a future where forests and communities thrive. Learn more about Hampton Lumber at hamptonlumber.com.

Support World Forestry Center!

Your tax-deductible donation helps us connect people and forests through innovative programs, community partnerships, and captivating art and science exhibits. As a 501(c)(3) nonprofit, our mission is to create and inspire champions of sustainable forestry. Thank you for being a part of this vital work by donating at worldforestry.org/donate.



In 2011, David Hampton planted a mix of Douglas fir and larch in the hillside between Willamina and Grand Ronde to create a giant smiley face that appears each autumn.



HAMPTON LUMBER

